



THE WORLD OF TEA



# THE WORLD OF TEA

## INDEX

The world of tea	3
A journey through the tea gardens	8
Blooming teas	14
Blends and flavoured teas	23
Fruit tea blends	33
Rooibos tea blends	40
Herbal teas	42
Organic teas and infusions	47
Sugar	51

## LEGENDA



Limited  
production



Delicious  
in its iced  
version



From organic  
farming



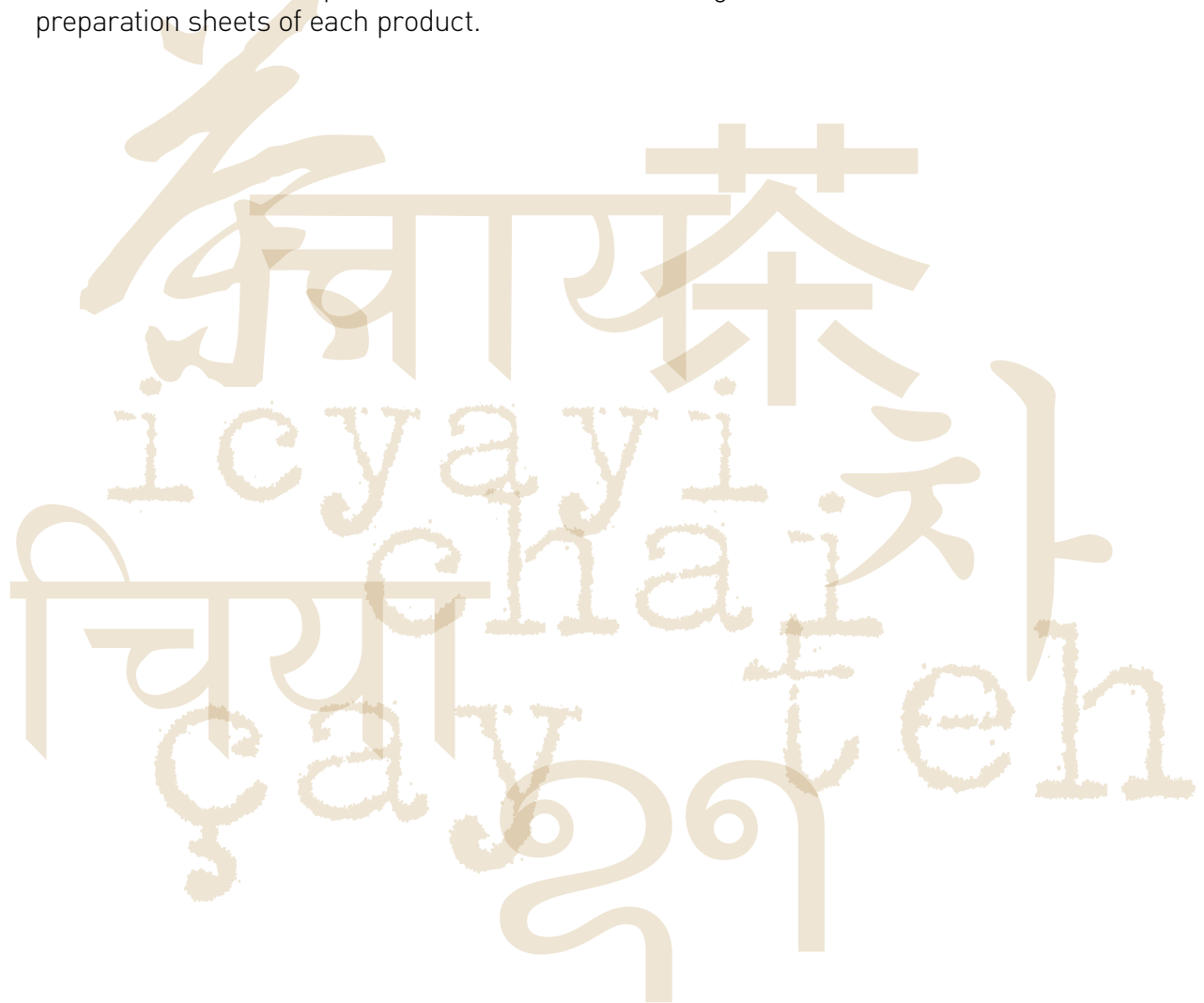
New

All teas are packed in 1 Kg bag unless otherwise specified.

# Five Golden Rules

It is easy to make a good tea if you keep in mind some rules:

- 1) water quality is important since taste is the final purpose; use only low salinity water, which is sweet and not much hard
- 2) use capacious tea infusers because the dry out leaves need space to open up and free their taste and scent. As an alternative, filter the tea in another teapot
- 3) the water must be on the right temperature, which changes according to the different kind: green and white teas, require a water's temperature between 70 and 80° C. By doing so, they will appear soft and gracious when poured in the cup
- 4) spill the water on the leaves
- 5) leave the tea in infusion for the right time following the relative infusion features. It is possible to ask us for the tasting and preparation sheets of each product.





# THE WORLD OF TEA



## FROM THE TEA PLANT TO THE CUP

Tea is the second most consumed beverage on earth after water. Wars have broken out over it; the trading of tea has caused empires and men to prosper; tea has inspired scholars, poets, philosophers and painters. Millions of people drink tea, but few of them know anything about the tea plant, the countries where it is cultivated or processing methods.

Welcome to the fascinating world of tea.



Tea comes from processing the *Camelia Sinensis*, an evergreen plant belonging to the *Camelliae* family which grows in all sub-tropical and tropical areas. The two main varieties are *Sinensis* and *Assamica*, although there are numerous hybrids. Crops begin to yield appreciable crops 3 to 5 years after seeding. Plants are repeatedly pruned to keep them below 1 metre in height and create a so-called “plucking table”.

The differences between the various types of tea are due to the characteristics of the cultivation area, climate, altitude, species and harvesting period but, above all, to processing methods.



The best qualities come from plucking the apical bud and the first one or two leaves. All stages, from plucking to processing, can be carried out by hand or machine.



## MAIN TEA CATEGORIES

**GREEN TEA:** the natural oxidation of the leaves is inhibited by heating or steaming, to maintain their green colour.

**BLACK TEA:** the leaves undergo a rolling process to break their membranes, thus accelerating oxidation and turning the leaves to a darker colour.



Withering - black tea



Firing- green tea

**OOLONG TEA:** semi-oxidised with aroma and flavour characteristics midway between black and green tea. Only the edges of the leaves are rolled and partially oxidised.

**WHITE TEA:** extremely natural and abounding in polyphenols, obtained by withering and drying the buds: Yin Zhen, or the buds and leaves: Pai Mu Tan.



Processing of  
half-oxidised tea

### POST-FERMENTED TEA

**(Pu Erh):** it undergoes a unique form of processing and microbial post-fermentation which gives it a full-bodied flavour and a woody, earthy aroma. Pu-Erh teas are available in leaf form, or pressed into cakes, balls or discs. They can be naturally post-fermented through a long ageing process in special cellars, which makes them costly and highly valuable, or special industrial processes can be used to speed up the finished product.



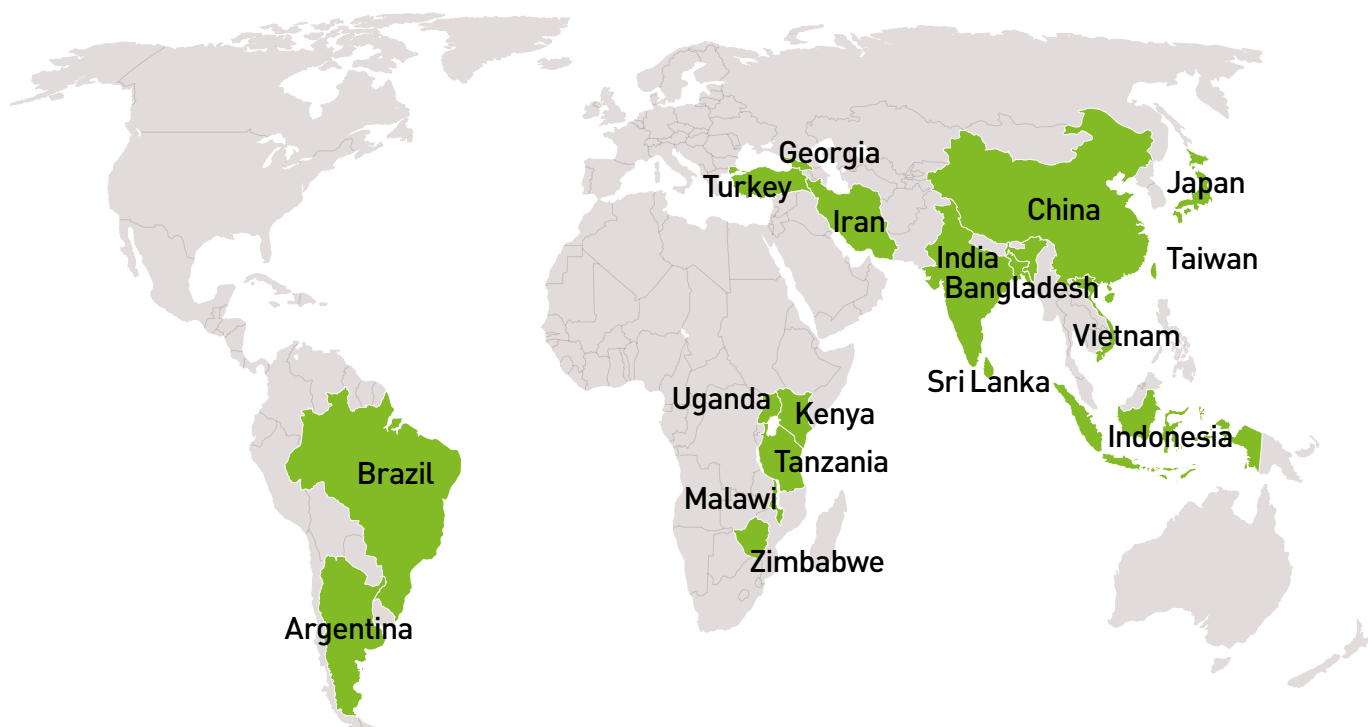
**SCENTED TEA:** during the manufacturing process, raw tea is blended with fresh flowers so that the tea absorbs the scent. Jasmine is the most popular scented tea of which there are many grades.

**FLAVOURED TEAS and BLENDS:** made of teas from various origins blended with flowers, fruit, citrus zest and aromas. The tea blender is the master expert in the art of blending, which requires a perfect balance between creativity and knowledge of consumers' trends.

**In China, black tea is known as red tea, half-oxidised tea as blue-green tea and Pu Erh as dark tea.**



## PRODUCING COUNTRIES



At the end of 2016 the world's tea production totalled 5,600.000 tons. The main producing countries are China, which in 2018 exceeded 2,473,000 tons, India, Kenya, Sri Lanka, and Turkey together representing 78% of the world's tea production. Although grown mainly in Asia up to the end of the 19th century, the increase in demand has spread the cultivation of tea worldwide, with the result that there are now more than 40 producing countries, which include Turkey, Vietnam, Iran, Indonesia, Japan, Nepal, Korea, Malawi, South Africa, Mozambique, Brazil and Argentina.

**La Via del Tè** recommends preserving its products in suitable food containers (preferably metal tins) away from direct sunlight and sources of heat.

**La Via del Tè** cannot guarantee a continuous supply of some teas due to their limited production.

A close-up photograph of a wooden spoon filled with dark, curly tea leaves. The spoon is positioned diagonally, and the tea leaves are piled high within it. Some leaves have spilled out onto the light-colored surface below. The background is softly blurred, showing more tea leaves scattered around. The text 'A JOURNEY THROUGH TEA GARDENS' is overlaid in white, sans-serif capital letters in the upper right quadrant.

# A JOURNEY THROUGH TEA GARDENS



# CHINA

Since ancient times tea has been renowned in China for its health properties. Legend has it that tea was discovered in 2737 BC by the father of agriculture and traditional medicine, Emperor Shen Nong. China, the world's major producer, is the homeland of "ten thousand teas": green, black, Oolong, Pu Erh, scented and white teas are the main categories, from fourteen main producing provinces: Zhejiang, Yunnan, Fujian, Anhui, Hunan, Guansi, Guangdong, to name but a few. The plucking and processing of special teas are still carried out by hand and the shapes and colours of the tea are always a wonder to behold and a delight for the palate. China is the homeland of famous teas like Gunpowder and Jasmine, but also of very rare specialities like Tai Mu Long Zhu, "Eye of the Dragon" or Moonlight white tea, produced in extremely limited quantities.



## GREEN TEAS

# CHINA


**G153**

### Lung Ching Top Grade

The best of all Lung Ching teas, from the West Lake (Xi Hu) area in Zhejiang province. The translucent, flattened leaves tend towards light green and the chestnutty flavour is truly unique.

250 g


**G154**

### Lung Ching Special

A spring green tea with flattened leaves, emerald green in colour, with a fresh, delicate flavour. The name, meaning 'Dragon's Well', derives from an ancient legend.

500 g


**G604**

### Special Gunpowder

The world's most popular green tea, with small leaves rolled into pellets and a fresh, pungent flavour. Commonly used in diets. Known in China as 'Zhu Cha'.

1000 g


**G904**

### Gunpowder

A green tea with light green, rolled leaves. The flavour is light and slightly bitter. Commercially known as "Gunpowder".

1000 g


**G605**

### Special Gunpowder

A green tea from organic farming. The bouquet is grassy; the flavour is fresh and slightly bitter. Modest caffeine content.

1000 g



## A JOURNEY TROUGH THE TEA GARDENS



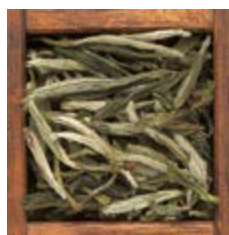
5801

**Chun Mee**

A green tea produced from the plant's youngest, most tender leave. With a strong, lingering flavour and nuances of prune. The name means 'Precious eyebrow'.



1000 g



SH14

**Snow Bud**

Abounding in apical buds, it grows at a height of over one thousand metres. The cup is straw coloured, the taste is smooth with notes of fruit and chestnut.

500 g



G906

**China Green OP\***

A green tea with slightly curled leaves, from organic farming. Flowery bouquet with a fresh and decisive flavour.



1000 g



SH16

**Gu Zhang Mao Jian**

One of China's oldest tea treasures, this green tea grows in Hunan. Pleasant aroma, fresh, delicate taste; in Chinese tradition a tea that "prolongs life".

500 g



DET2

**China OP**

Green tea decaffeinated by the delicate CO<sub>2</sub> method, which maintains flavour and colour better than any other.

**DECAFFEINATED**

1000 g



SH15

**Mao Feng**

Green tea grown at high altitudes in the province of Anhui. Rich in apical buds, it is harvested twice a year. The leaves and sprout produce a soft infusion with a lingering aftertaste.

500 g



FJ2

**Tai Mu Long Zhu**

A green tea made from young shoots rolled into tiny woolly balls. With a delicate, honey-nuanced flavour. The name means 'Dragon's Eye'.



250 g



SH18

**Silver Sprout Green**

The tightly curled little leaves open in the cup, revealing delicate sprouts and produce a delicate fruity drink with a sweetish aftertaste. An absolute must.

500 g



YN3

**Pi Lo Chun**

A highly-prized, extremely rare green tea from the Jiangsu province. The tiny shoots are covered with showy white hairs. Delicate, fruity flavour. The name means 'Spring Green Snails'.



250 g



SH13

**Yunnan Green**

This green tea comes from a species with especially large leaves. Abounding in woolly buds, it produces a delicate golden full-bodied beverage in the cup.

500 g



SH3

**Dong Yang Dong Bai**

One of the finest Chinese green teas from the Zhejiang province. Its small, dark, slim leaves and characteristic honeyed aroma have made it world famous.



250 g



SH37

**White Downy**

Famous green tea from the province of Guanxi, which gets its name from the fine white down on the buds. Refined, velvety in the mouth, with a lingering fruity aftertaste.

500 g



SH6

**White Monkey Pekoe**

A precious green tea from the Taimu Mountains in the Fujian region. To produce this tea only the buds and the first two leaves are picked. Fresh, light aroma.

250 g

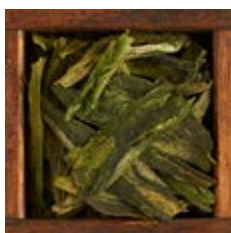


5803

**Moon Palace**

Classic Chinese green tea, one of the best grades of the famous Chun Mee, or Zhenmei, the famous tea with slightly curled leaves and a flowery meadows aroma.

1000 g



SH1



## Tai Ping Hou Kui

An absolute Chinese specialty, with a limited production, considered one of the best green tea. The harvest is only on springtime, resulting in a highly fragrant tea.

250 g



8323



## Yunnan Gong Fu OP

Black tea from Yunnan. Intense sweet aroma with hints of malt, wood, undergrowth. A smooth, non-astringent infusion.

1000 g

CHINA



## BLACK TEAS



8320S

## Lapsang Souchong

Black tea renowned the world over for its characteristic aroma and flavour obtained by a special smoking process using resinous wood.

1000 g



8316

## Golden Yunnan Black Special

A full-bodied black tea from the Yunnan province, rich in golden buds. Deep red in the cup, delicate and smooth with incredible hints of cocoa and honey.

250 g



CHINA



## OOLONG TEAS



BT0192



## Special Black Ning Hong Ying Hao

One of the best black Keemun teas, with small translucent leaves. The infusion is bright red with a fruity flavour.

250 g



Y002

## Special Oolong

A semi-oxidised tea with large curled leaves. Pronounced lingering flavour with an aftertaste of orchid. The name is the transliteration of the Chinese Wu Long, literally "Black Dragon".

1000 g



BT0193



## Keemun

Black tea with small slim translucent leaves. Well-known for its delicate orchid flavour and distinctive scent. A widely-appreciated speciality of Anhui.

1000 g



AT106

## Oolong Tie Kuan Yin

"Tea of the Iron goddess of Mercy", guardian of women. Semi-oxidised tea obtained from young, slightly rolled leaves. Aromatic with a full-bodied flavour.

1000 g



89230

## China Black Special

One of the most well-known Chinese black teas, produced in various provinces. The infusion is dark red with a decisive light flavour.

1000 g



CHINA



## WHITE TEAS



9401

## China Black Congou

Black tea obtained from leaves harvested in the Autumn. Strong, well-defined taste, but with modest tannin.

1000 g



W905



## Silvery Pekoe Yin Zhen

A highly-prized, extremely rare, spring-harvested white tea obtained exclusively from the plant's first buds. Delicate flavour with a lingering aftertaste. The Chinese name is "Silver needles".

250 g



## A JOURNEY TROUGH THE TEA GARDENS

### CHINA



W903

#### Pai Mu Tan - White Peony

Spring-harvested white tea, with woolly buds and larger leaves already opened. Characteristic honey flavour with flowery aroma and hints of rose.

500 g



0008

#### Jasmine Chun Feng

Top quality jasmine tea. Small leaves and penetrating aroma. Delicate, fresh flavour, its poetic name is "Spring Wind".

500 g



W906

#### Moonlight White Tea

From Yunnan, a priceless rare white tea from the highlands, produced only in April. Smooth sweet flavour with hints of honey and ripe fruit.

250 g



F9201

#### Special Jasmine

Jasmine tea is an old Chinese speciality, obtained by mixing green tea with fresh jasmine flowers. Aromatic, delicate, refreshing, an excellent base for refined cocktails.

1000 g



### CHINA



#### YELLOW TEAS



F9202

#### Special Jasmine

Organic farmed Jasmine tea. Pleasant-tasting and delicate, it leaves a lingering aftertaste with a floral aroma.

1000 g



SH22

#### Giallo Sunon

This tea comes from Anhui. A traditional technical process is used to obtain this golden beverage with walnut fragrance. Extremely delicate.

500 g



609

#### Green Magnolia

Highly scented green tea mixed with red magnolia flowers: a real speciality among Chinese scented teas.

1000 g



### CHINA



#### SCENTED TEAS



607

#### Sweet Osmanthus

Sweet and highly scented green tea mixed with flowers of the tea-olive plant. Exceptionally delicate cup, with a lingering floral aftertaste.

1000 g



0006

#### Jasmine Dragon Phoenix Pearl

An exceptional green tea made from the apical buds rolled into pearl shape, together with jasmine flowers. Very strong aroma and honey-flavoured.

250 g



F9203

#### Jasmine Qu Cha

Fragrant green tea scented with jasmine flowers, from spring crop. Hand-worked, limited production. Delicate, flowery, long-lasting aftertaste.

250 g



0009

#### King of Jasmine

From Yunnan a green tea of exceptional quality, abounding in large, perfect apical buds. Very strong aroma and smooth taste.

250 g



F9204

#### Jasmine Silver Needle

High-quality Chinese Jasmine green tea, with plenty of tips, repeatedly mixed with Asian jasmine flowers picked at dawn. A king among Jasmine teas.

250 g



## CHINA

茶

### PRESSED AND PU-ERH TEAS



S279

#### Pu Erh

Post-fermented tea from the Yunnan province, well-known for its beneficial properties. With slightly curled leaves, the brownish red infusion has a sweetish aftertaste.

1000 g

## CHINA



9613

#### Mini Tuo Cha Black

Black tea compressed into a small bird's nest shape. Strong, distinctive flavour, dark red cup. Produced in Yunnan, it is one of the oldest Chinese specialities.

1000 g



S281

#### King of Pu-Erh

Top quality loose leaf Pu Erh abounding in apical buds. Ripened under special humidity conditions, the tea develops a musky and strong aroma. Smooth sweetish taste. Dark red infusion.

500 g



9623

#### Mini Tuo Cha Verde

Green tea compressed into a small bird's nest shape. Fresh, slightly bitter taste.

1000 g

icyayai  
chay  
chay  
tey  
tey

## CHINA

### BLOOMING TEAS



SH40

#### Mistery Rose

Beautiful art tea, heart shaped. White perfect buds hiding a vertical branch of creamy white little roses. The production of this hand made tea is limited.

250 g



HN5

#### Xia Zhou Bi Feng

Prized green tea. The leaves and buds are combined into a small ball. Delicate taste with honey-flavoured aftertaste.

250 g



SH39

#### White Heart

White downy leaf tips are made up in the shape of a large velvety heart by hand. The perfect white buds surrounded a white marigold blossom. Smooth and flowery tea with a honey coloured liquor.

250 g



SH38

#### Yellow Sunshine

This hand-made speciality tea is a real pleasure both for the palate and for the sight. The hidden heart of the spheric blooming tea is a large yellow marigold blossom that slowly unfurls.

250 g



SH41

#### Marygold Rose

Perfect tips of green tea Silver Needles are tied together in the form of a whitish ball, hiding a big yellow-orange marigold flower and a tiny, tender rosebud.

250 g



SH42

#### Lucky Rose

A "rosette" of perfect young tips of green tea Mu Dan, with a tiny red rose bud in the centre: a poetic creation by master craftsmen of Gong Yi Cha, with a delicate floral aroma.

250 g

*For information on availability of these and any other blooming tea and to require detailed descriptive sheets with pictures, PLS contact the sales office.*





## INDIA

India is the world's second tea producer, specialised in black teas. The main producing regions are: Darjeeling, Assam, Terai, Doars, Nilgiri and Travancore. **Darjeeling**, at the foot of the Himalayan mountains, produces one of the finest teas (often referred to as the "Champagne" of teas), always in great demand by connoisseurs on account of the different flavour and aroma of the various crops.

*First Flush* is harvested between April and May, *Inbetween* between May and June, *Second Flush* between June and July, *Autumnal* between October and November. In Darjeeling, the Ambootia group is particularly sensitive to environmental issues and unites several famous tea gardens that adopt both organic and biodynamic farming methods, resulting in the production of top quality tea.

**Assam**, a valley through which the Brahmaputra river flows, produces strong malted teas. The British began cultivating tea in the first half of the nineteenth century following vast land reclamation and deforestation operations.



## DARJEELING

## INDIA



DJ2

**Darjeeling FTGFOP1**

FTGFOP grade blend of Darjeeling black tea. Lingering, fresh aroma with a fruity flavour. A classic and timeless tea, worldwide popular.

1000 g



DJ23

**Darjeeling Ambootia FTGFOP1 First Flush**

Top class first flush from the garden of Ambootia. Light green leaves, alternated with dark leaves and silver tips. Notes of fresh hazel-nuts. The infusion is smooth with notes of mango.

1000 g



DJ13

**Darjeeling Puttabong Second Flush SFTGFOP1**

Black tea from the Puttabong estate, also known as Tukvar. Abounding in golden buds, this second flush tea it produces a generous aromatic infusion.

1000 g



DJ4

**Darjeeling Gielle FTGFOP1 Second Flush**

Single-origin black tea, obtained from fine picking (one shoot and two leaves). Honey aroma and delicate taste. The plantation is named after the river of the same name.

1000 g



DJ14

**Darjeeling Margaret's Hope Second Flush FTGFOP1**

From one of the most famous gardens, a black tea with a strong aroma of nutmeg; a bright and pleasant infusion. The name of the estate refers to the sad story of the first owner's daughter.

1000 g

## A JOURNEY TROUGH THE TEA GARDENS

### INDIA



DJ15

#### Darjeeling Castleton Second Flush SFTGFOP1

A top quality black tea from the Castleton estate in a valley in south Darjeeling. Aromatic infusion with muscatel aftertaste.

1000 g



AS3

#### Assam Nonaipara FTGFOP1

Top quality black tea, obtained from the first leaves and part of the golden buds. Pronounced aroma with a malty taste and hints of chocolate.

1000 g



DJ17

#### Darjeeling Verde KGFOP1

A not oxidized Indian Darjeeling tea, rich in tender tips. The colour cup is light amber and the flavour is aromatic and delicately herbaceous with sweetish longlasting aftertaste.

1000 g



AS4

#### Assam FTGFOP1

Organic farmed black tea, obtained from beautiful slightly curled dark leaves. Intense, full-bodied taste with malty nuances.

1000 g



DJ28

#### Darjeeling Diamond Arya

The jewel among Darjeeling black teas, this extraordinary 2nd flush is soft and fruity, rich of apical buds. A tea for demanding palates.

250 g



AS7

#### Assam Doomni SFTGFOP1

Exceptional black tea, a first crop coming from the garden of Doomni. Beautiful proportion of golden tips, intense aroma of tobacco, wood, malt, caramel, cocoa.

500 g

### INDIA

#### ASSAM

चाय

### INDIA

#### NILGIRI

चाय



AS1

#### Assam Konghea SFTGFOP1

Black tea with a slightly floral aroma. Dark coloured leaves and golden buds which produce a clear infusion in the cup with a pronounced rich flavour.

1000 g



IND3

#### Nilgiri OP

Mild, highly aromatic black tea from the Blue Mountains in the South of India. Excellent as morning tea even with a dash of milk.

1000 g



AS2

#### Assam TGFOP

Black tea made from dark regular leaves. Strong distinctive flavour. Dark red in the cup. A classic tea that can stand a dash of milk.

1000 g



# SRI LANKA

The island of Ceylon is the world's fourth tea producer. The best crops come from the mountainous region of Nuwara Eliya, abounding in rivers and falls, at an altitude of around 2000 metres. Tea was first cultivated in Sri Lanka in 1870 after a fungus killed the coffee plants (the main crop produced in Ceylon) for which the island was renowned. Sri Lanka's black teas are all full-bodied and highly fragrant and are appreciated as classics the world over: depending on the different heights of the tea-producing areas, tea is classified as Low Grown (Pahata rata) at altitude below 600 m, Mid grown (Medarata), between 600 and 1200 m and High Grown (Udarata), that grow at an altitude above 1200 m in the Nuwara Eliya district. In recent years Sri Lanka has begun producing green and white teas with appreciable results.



## CEYLON

# CEYLON


**HC1**

**Orange Pekoe Flowery OP1**  
Black tea with slightly curled large leaves. Intense aroma and classic, smooth, pronounced, slightly tannic flavour. Hints of wood.

1000 g


**HC3**

**Orange Pekoe Fannings**  
Black tea obtained from fine particles of leaves. Delicate aroma with a strong flavour. Dark red infusion.

1000 g


**HC8**

**Orange Pekoe OP1**  
Large leaf black tea from organic farming. Fragrant, with smooth flavour.

1000 g


**HC6**

**Nuwara OP**  
The "Champagne" of Ceylon teas, cultivated at a height of over 2,000 metres. The infusion is amber coloured and has a very particular aroma with hints of wood. Soft flavour.

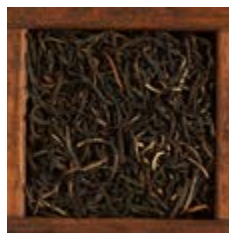
1000 g

## A JOURNEY TROUGH THE TEA GARDENS

**HC7****Grand Jardin GFOP**

Top quality black tea made from fine leaves abounding with white apical buds. Pronounced flavour with lingering flowery aroma.

1000 g

**HC12****Ceylon Vithanakande FBOPEXSP**

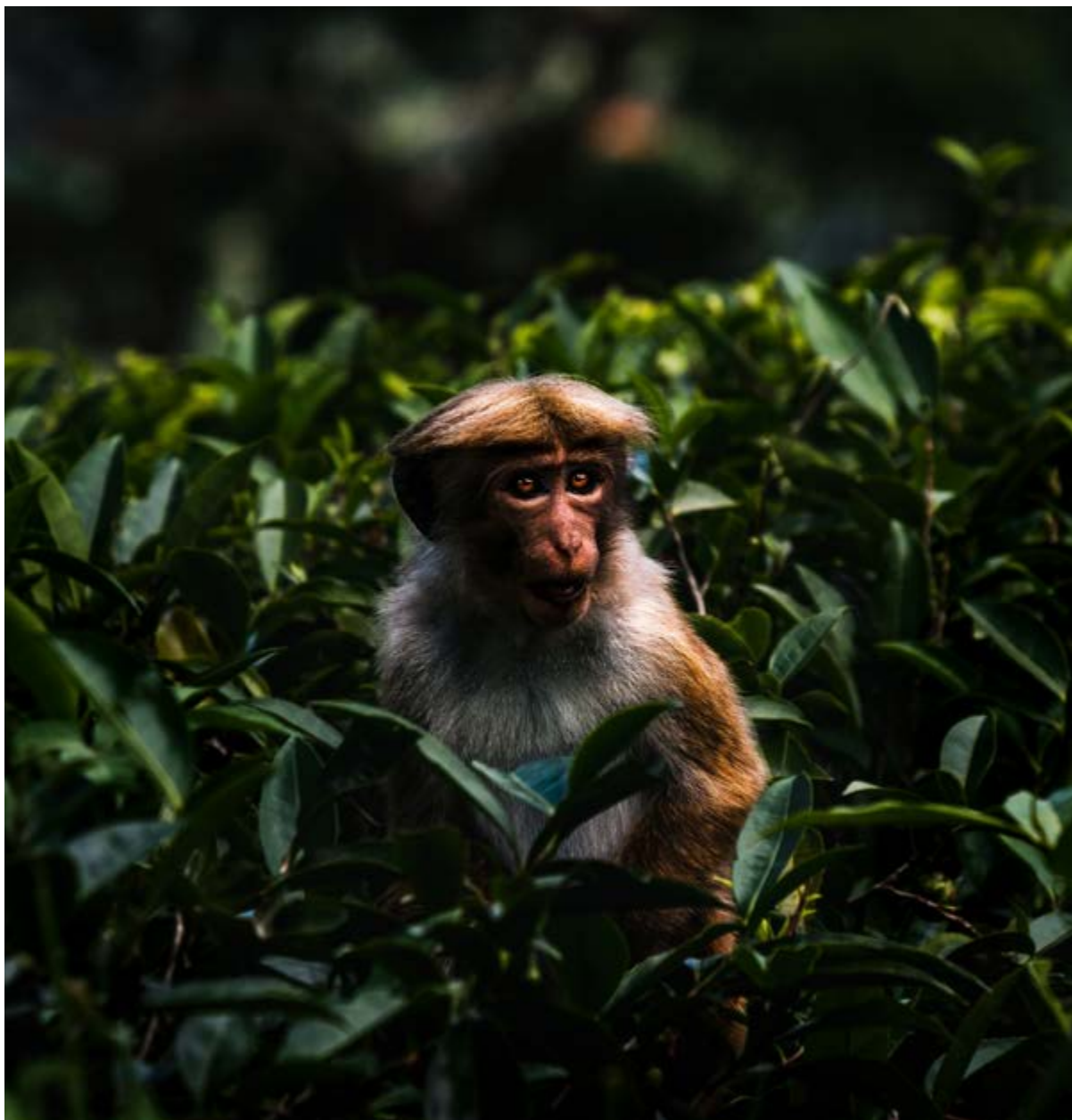
By far considered one of the best black tea from Sri Lanka, the letters indicate an extra percentage of apical buds, gold and silver together. A must for all lovers of pure tea.

500 g

**HC11****Ceylon OP1 Lovers Leap**

Fragrant high-grown black tea, full-bodied and soft. The name of the tea garden is inspired by the legend of two unlucky sweethearts, fallen down from the top of a waterfall.

1000 g





## JAPAN

JAPAN

Tea was first introduced to Japan from China around 800 AD by Buddhist monks who praised its health-giving properties. It later became an aristocratic beverage under the reign of Emperor Saga, who encouraged its cultivation. Japan produces almost exclusively green tea, the oxidation of which is inhibited by steaming. This process gives Japanese teas an unmistakable aroma and flavour which, together with their bright green colour and low caffeine content of the best-selling varieties, make them very popular in Europe. Japanese tea is the product of a refined tradition whose highest expression is found in Shinka, the spring new tea and in Cha-no-yu, the traditional Japanese tea ceremony.



## GREEN TEAS

## JAPAN



J402

**Shinka Homare 2019**

A First Flush Gyokuro picked in spring in Kagoshima, with an overwhelming, enveloping scent. The taste is intense and fresh, has distinct umami notes and a mild, long-lasting sweetness.

250 g



J372

**Sencha Asagiri**

Excellent first crop Sencha, with a fresh and gentle scent, sweet and velvety taste rich in vegetable, delicate nuances.

500 g



J371

**Gyokuro Takumi**

Superior grade of Gyokuro, obtained from shaded cultivation and entirely hand-made processing. Soft, full, velvety. True tears of jade.

250 g



J388

**Sencha Special Fine**

Precious green tea with peculiar slightly flattened light green leaves. It is carefully steamed before rolling to prevent oxidation. Fresh flavour with a strong sweetish taste.

500 g

## A JOURNEY TROUGH THE TEA GARDENS



JJ366/BIO

**Matcha Tsuru**

Prized powdered green tea used for traditional Japanese tea ceremonies or as refined food and beverages ingredient adding color, taste and unmistakable fragrance.

200 g



J380

**Hojicha**

Green tea with large brown leaves obtained by a final roasting process. This tea has a delicate flavour with hints of hazelnut and a low caffeine content.

1000 g



J401

**Genmaicha Matcha**

An excellent Genmaicha, with Sencha green tea and toasted rice, enriched with the intense flavor of Matcha powdered tea. Pleasantly herbaceous, rich in anti-oxidants.

500 g



J387

**Kukicha verde**

An unroasted version of Kukicha, the green tea made with abundance of stalks, giving a light and mild cup. Very very low caffeine content.

500 g



J381

**Genmaicha**

Green tea with large flattened leaves mixed with toasted and puffed rice. Characteristic, slightly salty flavour. Very popular in Japan as "Tea for Children".

1000 g



J385

**Tamariokucha**

Green tea with small slightly curled leaves, mainly produced in the Island of Kyushu. Fresh grassy flavour with a sweet aftertaste.

250 g



379

**Bancha**

Green tea obtained from from the lower and mature shoots of the tea bush. Fresh, slightly bitter flavour, this tea has a low caffeine content.

1000 g

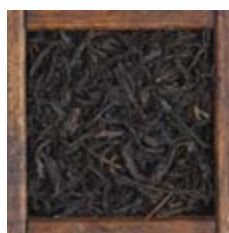
**BLACK TEAS**

J400

**Bancha**

Green tea made of long flattened organically farmed leaves. Thirst-quenching, a very popular tea with a modest caffeine content.

1000 g



J384

**Benifuki**

A real rarity, Benifuki is the only black tea produced in Japan from the cultivar of the same name. It has a highly aromatic, mild and sweet character, with an aftertaste of Cinnamon.

250 g

**THE CULT OF FIRST FLUSH TEA**

Shincha is made by using the leaves from the first picking of the season. These leaves are the youngest, freshest and are also known for having the highest concentration of minerals and amino-acids.

*Shin* is Japanese for new and *Cha* Japanese for tea, literally: the new tea. The new green tea tastes extremely fresh and lively, is richly complex and particularly healthy. Shincha was once a rarity reserved only for the Japanese emperor (*Tenno*) and the nobil-

ity. Today, the first Shincha and its harvest are events that the whole of Japan expects and celebrates. The celebrations and the cult surrounding the first Shincha in Japan are something unique, that's why the best Shincha are selected and awarded.

Shincha teas impress with a unique tangy-fresh and full-bodied simultaneous taste. In addition, a seductive combination of umami and a round, harmonious sweetness.



# TAIWAN

TAIWAN

In front of the Chinese province of Fujian, in the East China Sea, lies the splendid island of Taiwan, once a Portuguese colony known as Ilha Formosa (Beautiful Island). The intensive cultivation of tea plants began around the end of the 19<sup>th</sup> century, thanks to the efforts of John Dodd, an English businessman, who promoted Taiwanese teas in Europe. The island's mild climate favours the production of green, oolong and semi oxidised teas. In addition, Tung Ting and Oriental Beauty, two unique teas with an unmistakable flavour are produced exclusively in Taiwan.



## SEMI-OXIDIZED TEAS

# TAIWAN



Y001

### Oriental Beauty

Taiwan's best quality famous semi-oxidised tea (oxidization around 70%), with an abundance of white buds and an aroma of wild orchid.

250 g



Y007

### Tung Ting

Slightly oxidised tea (between 12 and 18%) with a partially rolled leaf. Golden coloured cup with a sweetish aftertaste. One of Formosa's best teas.

250 g



Y010

### Dark Pearl Oolong

Oolong with an oxidation grade of over 60%. The leaves are still hand rolled. Soft but intense flavour, with roasted tones. Vanilla, honey and mango aroma. A rare gem.

250 g

icyayai  
chay  
chay teh

## OTHER COUNTRIES



**NPB**

### Golden Nepal FTGFOP1

Top quality black tea, cultivated in plantations at a height of over 2000 m. Fruity flavour and very aromatic, recalling the best Darjeeling.

1000 g



**NG1**



### Papua Nuova Guinea Silver Tips Minjigina

Ultra-limited production for this magnificent white tea, made up of only apical buds, from bushes growing at 2000 meters. Soft, enveloping, floral notes.

250 g



**BOP**

### Turchia Rizè Broken BOP

Black tea made from partly broken leaves. A very special aroma, strong pronounced flavour.

1000 g



**TH1**



### Thailand Red Oolong Royal Pearl

A smooth and sweet tasting Oolong with notes of dates, fig, raisins, with an underlying complex of toast and velvety texture. Excellent.

500 g



**KO1**



### Korean Green Tea

An high-quality spring crop , made up of tender small leaves slightly curled, hand processed. The tea yields a velvety smooth cup, with the fragrance of flowery meadows.

500 g



**AF1**

### Kenya Mariny TGFOP

Black tea from plantations in the Kericho Highlands. Strong, slightly fruity flavour. In the cup the infusion is dark with golden highlights.

1000 g



**TN21**

### Oolong Tanzania Usambara

Beautiful African Dark Oolong, Chinese " dark" style. The aroma is strong , roasted, with hazelnut and cocoa persistent notes.

500 g



**AF2**

### Kenya CTC

Black tea obtained from broken leaves with the crushing-tearing-curling method. Intense aroma, strong, pronounced taste. Tolerates a dash of milk.

1000 g



In Papua New Guinea (PNG) tea is mostly grown in Western Highlands Province between 1200 m and 1950 m altitude in areas where mean annual rainfall is around 2500 mm.

Tea was established as an experimental crop on a government-owned plantation at Garaina in Morobe Province in 1950.



A close-up photograph of a glass of tea and loose leaf tea. The glass, on the left, is filled with a golden-yellow liquid. To its right, a pile of loose leaf tea is scattered on a light-colored wooden surface. The tea leaves are dark green and brown, with some small purple and yellow flowers interspersed. In the background, a brass-colored metal strainer is visible. The text "BLENDS AND FLAVOURED TEAS" is overlaid in white, sans-serif capital letters in the upper right area.

# BLENDS AND FLAVOURED TEAS



## BLENDS AND FLAVOURED TEAS

### “La Via del Tè” blends



390

#### Arabo

Chinese green tea, Chinese black tea, cloves, ginger, almond pieces, spicy flavour.

1000 g



744

#### Colazione da Tiffany

Highly fragrant mixture of Chinese green tea and Japanese Sencha, enriched with candied sugar crystals.

1000 g



387

#### Bancha Rosa

Japanese Green tea, Chinese black tea, rose petals, aromas. Exotic taste and nutty aroma.

1000 g



431

#### Creamy Lemon

Creamy, sweet and citrusy at the same time, this blend of Chinese and Japanese green tea with a long lasting aroma of lemon zest and sugar will seduce you.

1000 g



734

#### Blue Willow

Delicious mixture of black tea, blueberries, raspberries and flowers. The vanilla aroma and fruity taste recall home-made cakes.

1000 g



721

#### Dolce risveglio con ginseng

Fragrant blend of green teas with sunflower petals, lemon balm, orange zest and ginseng root. Sweet, creamy flavour.

1000 g



604

#### Bosco Incantato

Mixture of semi-oxidized Chinese tea with blueberries, strawberry and redcurrant leaves, calendula and aromas. Sweet, delicate flavour of berries.

1000 g



730

#### Dolce tentazione

A tasty mixture of black tea, strawberry and rose petals, with a chocolate and fruit flavour. To tempt the palate.

1000 g

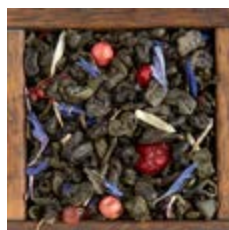


733

#### Casablanca

An extraordinary mixture of green teas, rose petals, ginger and orange zest, with a delicate citrus taste and an unmistakable nuance of Moroccan nana mint.

1000 g

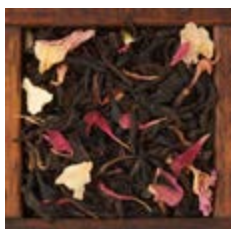


754

#### Dolce Vita

Green tea, pink pepper, redcurrant, coriander, raspberry, cornflower are just some of the ingredients of this delicate mixture with a rich sweet flavour of blueberries and hints of cocoa.

1000 g



432

#### Cedro & Lime (Citron & Lime)

The enveloping fragrance of this blend evokes exotic and mysterious gardens. A trio of black teas - China, India and Sri Lanka - enriched by lemon peel, petals of red cornflower and muscat rose and only natural flavors.

1000 g



800

#### Earl Grey Supreme

Blend of Chinese and Indian black teas made from golden buds of Golden Yunnan enriched with essential oil of bergamot and chocolate aroma. Created for lovers of the world's most famous tea blend.

1000 g

## BLENDINGS AND FLAVOURED TEAS

## "LA VIA DEL TÈ" BLENDS



743

### Elisabeth

Sugar crystals soften and decorate this regal fruity blend based on delicate black tea flavoured with lychees, rose petals and mallow. Excellent as a cool drink "on the rocks".

1000 g



428

### Ginger Mango

A love at first sight: on a basis of Chinese green tea, papaya pieces, yellow roses and the flavour of ripe mango and ginger, long-lasting in the mouth.

1000 g



409

### English Breakfast

Popular blend of black teas from Indonesia and Ceylon. Obtained from broken leaves with a distinctive strong flavour. A classic blend for breakfast, excellent with milk and sugar.

1000 g



430

### Ginger & Melograno (Ginger & Pomegranate)

Soft blend of Chinese green teas, lemon rind, ginger root, raspberry and rose buds, with lime, ginger and pomegranate natural flavours. Excellent, both hot and iced.

1000 g



414

### English Breakfast

Obtained from black teas from India, China and Sri Lanka, a revisitation of a great whole-leaf classic grown by organic farming. A strong, full-bodied blend, ideal for breakfast.

1000 g



720

### Golden Grey

Highly scented Indian and Chinese top quality black tea, abounding in golden buds. Smooth taste with an intense aroma of Calabrian bergamot. For demanding palates.

500 g



422

### Forever (con ginger)

Light and refreshing blend of Chinese green teas, lemon zest, ginger, mallow flowers carefully flavoured with ginger and lemon.

1000 g



425

### Greeny Rose

Sweet and fragrant blend of green tea, white tea buds, rose petals and the natural enveloping aroma of rose and mango.

1000 g



717

### Fuoco di Ceylon

A fantastic combination of Ceylon tea, sugar, almonds, strawberry pieces, spices and chili pepper. Spicy and sweet in one, with an aroma of strawberries and cream really tempting.

1000 g



701

### Irish Breakfast

Blend of black tea with finely broken leaves. Strong distinctive taste with a pungent, intense aroma.

1000 g



358

### Giamaica

Chinese black tea, citrus peel, aromas. Vanilla and rum flavour. Excellent base for preparing imaginative punches and cocktails.

1000 g

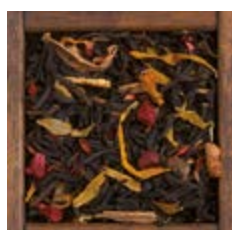


786

### Lady Strawberry

Smooth tea blend made up of Bancha, a low caffeine green tea. The sweet flavor of wild strawberry enriched the blend.

1000 g



742

### Giardino segreto

A deliciously spicy mixture recalling the gardens of India: black tea, orange peel, flower petals and an intense aroma of vanilla, orange and cinnamon.

1000 g



731

### Laguna blu

Green tea, pineapple, papaya, cornflower and sunflower are the ingredients of this scented and exciting mixture with a sweet flavour of apricot and pineapple.

1000 g





## BLENDS AND FLAVOURED TEAS



83255



### Lapsang Earl Grey

Elegant and balanced blend of Chinese black teas, with a delicious smoky hint, created for lovers of strong, flavourful teas.

1000 g



434



### Momojito

Who doesn't know Mojito? We have recreated the scent of the famous Cuban cocktail by adding to green tea mint, citrus peel, sugar crystals and lime. Let the party begin.

1000 g



712



### Lemon Fresh

Blend of Bancha green tea, orange zest, apple and mallow flowers. Low caffeine content, fresh flavour of apple and lemon. Excellent as iced tea.

1000 g



426



### Monsoon

A blend of green tea, marygold petals and mango bits, evoking the scents of subtropical lands bathed by the heavy seasonal rainfall.

1000 g



782

### Love story

Jasmine tea combines with Bancha green tea, strawberry and cornflower in this sweet romantic creation, with strawberry and lemon aroma.

1000 g



784



### Moroccan Mint Tea

Inspired by a traditional North African recipe. A mixture with an intense and lingering aroma: special Gunpowder green tea and natural aroma of Nana mint.

1000 g



724



### Madama Butterfly

A delicate fantasy of Japanese green tea, fruit and cornflowers, with a sweet flavour and light aroma of citrus; a tea for your dreams.

1000 g



710

### Orange Cream

Chinese green tea, candied sugar crystals, citrus rind, marygold calendula and flavours for a deliciously-tasting tea blend, dedicated to children.

1000 g



433



### Mango & Lime

A rare balance of scent and taste: Chinese green teas, jasmine tea, lemon rind, cornflower petals, yellow roses and natural flavours come together in this full-bodied and fruity blend, which inebriates the senses.

1000 g



792

### Orange Beauty

A blend of Pu Erh tea, fruit and flowers with an intriguing aroma of orange and custard cream. Full-bodied, perfect at the end of a meal as a delicious digestive.

1000 g



740



### Mint & Chocolate

A mixture of Chinese black tea, yellow flowers and mint leaves with an irresistible aroma of chocolate. A perfect marriage of flavour and aroma.

1000 g



723

### Piccolo Principe

A sweet mixture of green tea, apple, raisins and pine-seeds; the fragrance is reminiscent of home-made cakes and takes you back to the enchantment and magic of childhood.

1000 g



376

### Miscela Natalizia

Chinese black tea, cloves, safflower and flavours. Spicy taste with rum and vanilla. A classic tea for family celebration days.

1000 g



704

### Prince of Wales

Blend of Indian and Ceylon black tea. Very aromatic with a strong, full-bodied flavour. Perfect with scones and biscuits.

1000 g

## BLENDINGS AND FLAVOURED TEAS

## "LA VIA DEL TÈ" BLENDS



713

### Rosa del Giappone

An elegant mixture of green tea and toasted rice, cornflower, rosebuds. Low in caffeine content with a sweet flavour of ripe wild strawberries.



1000 g



726

### Santa Claus

Refined creation combining black tea and white tea, almond, pink pepper and safflower, sweet tasting and with a vanilla aroma, typical of Christmas.

1000 g



427

### Rose & Grey

Rose joins Bergamot in a black tea blend with a soft taste and intense citrusy-flowery fragrance: the revival of a timeless classic.



1000 g



423

### Secrets (with ginger)

Sweet blend of Chinese black tea enriched by peach and ginger flavour, ginger pieces, sunflower petals and cornflower. Cold or iced, a real treat too.



1000 g



728

### Rosso Veneziano

The fragrance of strawberries and cream predominates in this sweet, spicy mixture of black teas, red roses, red currants and pink pepper. Brightly coloured and irresistible.



1000 g



722

### Soffio del drago con ginseng

Ginseng has for centuries been widely appreciated in the East. Here it is combined with green tea and little pieces of strawberry to produce an aromatic beverage with a smooth sweet taste.

1000 g



716

### Royal Breakfast

A mixture for connoisseurs: prized Chinese black teas "marry" the vigour of Assam tea in an exceptional breakfast blend. Refined, strong, balanced.

1000 g



791

### Sogno di una geisha

A refined, elegant premium blend of Japanese green tea, cornflower rose and sunflower petals with a heady aroma of lemon and mango that lingers in the mouth.

1000 g



413

### Russian Caravan

Balanced blend of Indian and Chinese black teas with a slightly smoky flavour, strong and full-bodied. A tribute to the ancient caravan route that carried tea from Taiwan to Russia.

1000 g



435

### Sweet Cacao

An intense, balanced and full-bodied blend of black teas from China and India, cocoa shell peels and elder flowers. Mouth-watering aroma of toasted cocoa and caramel.

1000 g



781

### Sakura

Sakura, Cherry Blossom, is the name of this refined blend of Japanese green teas, musk rose petals and red currants, with an intense aroma of cherry and almond.



1000 g



719

### Tè Turco alla Mela

Turkish black tea, apple, cinnamon, sugar and flavours, for a scented mixture inspired by the traditional beverage. A tribute to travelers.



1000 g



711

### Samurai

An original tea blend with a low caffeine content: Bancha green tea, cinnamon, cloves, almond and safflower. Intense flavour of orange and spices.



1000 g



793

### That's Amore

A mix of black and green tea, raisins and pieces of wild strawberries with a penetrating and sweet aroma of strawberry grapes and red berries. Delicate, smooth, ideal as a cool drink or as a base for cocktails.



1000 g



## BLENDS AND FLAVOURED TEAS



429

**Tenera è la notte**

The fragrance of red fruits of the forest and pomegranate, characterizes this sweet and romantic blend of black tea, excellent both hot and iced.

1000 g



366

**Fior di Zagara**

Chinese black tea, citrus zest, orange blossom, citrus flavoured. Orange blossom is traditionally used for brides' bouquets and ornaments.

1000 g



## I Profumi del Tè

Six blends carefully studied by La Via del Tè. Tea joins its natural fragrance to the typical Mediterranean scents, from the citrus of Sicily and Calabria, to the sweet Moroccan mint, to jasmine, in six highly fragrant blends in an ideal sensory journey.

## Tea Travels

Over the centuries each country has developed its own passion for tea and unique recipes and traditions. Tea travel is an imaginary journey into the history, the legends and the aromas of distant lands.



737

**Romeo e Giulietta**

A romantic blend of green teas, papaya, strawberries and rose petals with a sweet, fruity fragrance. Perfect at any time of day.

1000 g



755

**Tuaregh  
Viaggio nel Sahara**

A blend of green teas scented with Nana mint and lemon, inspired by the beverage of the desert Nomads, offered to travellers in three subsequent rounds.

1000 g



380

**Rosa d'Inverno**

Japanese green tea and scented Chinese tea, with rose petals, sunflowers and aromas. Peach and apricot flavoured. An evergreen blend of La Via del Tè.

1000 g



756

**Shahrazād  
Viaggio in Persia**

A mélange of teas with a sweet aroma of summer fruits and pomegranate, inspired by the princess of "A thousand and one nights".

1000 g



411

**Earl Grey Imperiale**

Top quality Darjeeling Black tea, enriched with the aroma of Calabrian bergamot. A full-bodied fruity flavour, very aromatic.

1000 g



757

**Rajasthan  
Viaggio in India**

A blend of Assam black tea and spices from a traditional recipe of the Indian Chai. Strong taste, with a sweet, intense aroma. Ideal with sugar and milk.

1000 g



410

**Bancha Fiorito**

Blend of Japanese and Chinese green tea, with the addition of jasmine flowers and fruity, fresh flavours. A top seller.

1000 g



758

**Lu Yu  
Viaggio in Cina**

Ancient China relives in the blend of Oolong tea and white "Silver Needles" tea. Tea of serenity, with a heady aroma of red fruits.

1000 g



735

**Marrakech Mint Tea**

A traditional blend of Chinese green tea and Moroccan nana mint, a sweet and unmistakable flavour. Tea for travelers.

1000 g



759

**Tat'jana  
Viaggio in Russia**

A Russian style tea blend created from nineteenth century recipes. An elegant mélange of black teas with a aroma of orange and bergamot.

1000 g





760

### Rooibos Cape Town

#### Viaggio in South Africa

Rooibos combines with rose petals, mallow and sunflower in this sweet caffeine-free blend with a delicate and intense fragrance of cream caramel.

1000 g



799

### Il sogno di Michelangelo

Oolong tea with sweet and intense flavour of chestnut and cream, dedicated to Michelangelo's David, the masterpiece of the Tuscan genius.

1000 g

## Firenze

A dutiful tribute to Firenze and some of its priceless art treasures: six fragrant blends, the result of a painstaking research on facts, personalities, food and legends of the Renaissance.

## Christmas Teas

Delicate snow crystals, the smell of sweets, candied fruits and spices, a pinch of magic: it's Christmas.



794

### La leggenda di Boboli

Inspired by the wonderful Medici's garden, a blend of black teas and flowers, enriched by the flavours of precious citrus fruits.

1000 g



897

### Christmas in Love

Festivity herbal tea blend of rosehips, passion flower and vervain, with citrusy Yuzu and pear scents. Caffeine free.

1000 g



795

### Il segreto dei Medici

Inspired by a secret Renaissance recipe, we have created a smooth blend of Jasmine green tea with chocolate scent.

1000 g



642

### Christmas Chocolate

A fruity, caffeine free infusion with hibiscus flowers, cacao shells, rose hips, orange rind and cinnamon. Sweet and strong aroma with cacao notes, spices and orange.

1000 g



796

### Santa Maria del Fiore

An elegant blend of tea and flowers, with sweet aroma of ripe grapes and red fruits, a tribute to the dome of Firenze cathedral.

1000 g



741

### Green Christmas

Christmas blend, suitable for the whole family: Bancha green tea, orange zest, apple, cardamom, candied sugar cubes and sunflower petals. Sweet, fruity aroma.

1000 g



797

### Appuntamento sul Ponte Vecchio

Green tea blend with sweet and fruity strawberry flavour, dedicated to the Ponte Vecchio, the destination of lovers all over the world.

1000 g



421

### Orange Christmas

Mild, soft Rooibos blend, apple, orange rind and cinnamon, with the intense flavour of candied fruits and spices. Caffeine free.

1000 g



798

### Il mistero della Venere

This blend of black teas scented with figs and almonds, is dedicated to the mystery of the beautiful Botticelli's model, supposed to have been the most beautiful woman of Renaissance.

1000 g



736

### Racconto di Natale

A blend of Assam black tea, cinnamon, coriander, cloves and pieces of apple, with a warm aroma of spice. Excellent with sugar or honey.

1000 g



## BLENDS AND FLAVOURED TEAS



727

### White Christmas

An appetizing blend of Chinese black tea, sugar crystals, almonds, currants, heather flowers and yellow rosebuds with the irresistible aroma of freshly baked biscuits.

1000 g



419

### Lady Angel

White Peony, a mythological angel-like Chinese woman, inspired many tales and also this blend of white Pai Mu Tan tea, mallow petals and sunflowers, with a sweet, fruity aroma of grapes and red fruits.

500 g

## Golden Jubilee

Two outstanding blends created to celebrate the 50° anniversary of La Via del Tè. Between tradition and innovation, the culture of tea in Italy, since 1961.



420

### Snow white

A blend of Chinese white teas, red rose petals and marigold: the delicate and flowery aroma of Pai Mu Tan combines with that of strawberry and peach, leaving a lingering sweet velvety sensation in the mouth.

500 g



1961/P

### 1961

Blend of full leaf black teas from India and Ceylon, with a distinctive citrus flavour. Harmonious, elegant, full-bodied and round tea.

1000 g

## SweetTeas

Four yummy creations of half-oxidized Oolong and Tung Ting teas with modest caffeine content. The perfect zero calories indulgence.



2011/P

### 2011

Blend of Chinese green tea and King of Jasmine, with a sweet strawberry and red fruit flavour. Delicate, smooth, with a long lasting flowery aftertaste.

1000 g



787

### Creamy Oolong

A challenge for our tea-blenders, a rich and balanced mixture with a sweet creamy aroma. Irresistible.

1000 g

## White Peony

Four precious blends with a Pai Mu Tan white tea base. The name means White Peony. The peony is one of the most popular flowers in China. It symbolises female beauty and at one time was grown exclusively in the imperial gardens.



788

### Nutty Oolong

A tempting aroma of hazelnut and vanilla, with the rich and fruity notes of Oolong and Tung Ting.

1000 g



416

### Secret Moon

A delicate combination of white tea, red rosebuds and musk rose petals; the smoothness of the tea exalts the sweet aroma with light notes of cinnamon. A tea for dreaming of faraway lands.

500 g



789

### Chocolat Oolong

The aroma resembles a freshly baked chocolate cake, with sweet nuances of vanilla and cream.

1000 g



418

### Pearl of China

Perfect opalescent white buds enrich this mixture of Pai Mu Tan, yellow rosebuds and orange blossom. With its intense aroma of natural citron, the beverage leaves a lingering sensation of honey in the mouth.

500 g



790

### Cookie Oolong

The fragrance of home-made biscuits, a perfect tea blend to sip all day, for a quiet moment of relaxation.

1000 g



# Flavoured Black Tea



304

## Arancio (Orange)

Chinese black tea, orange flowers and rind, natural flavor.

1000 g

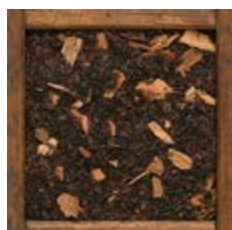


318

## Limone (Lemon)

Chinese black tea, lemon peel, natural flavour.

1000 g



306

## Cannella (Cinnamon)

Indian broken black tea, cinnamon, flavours.

1000 g



351

## Lychee

We have chosen a Chinese black tea, very smooth and with no tannic bitterness and combined it with the natural flavour of Lychee, in a soft, sweetish cuppa.

1000 g



349

## Ciocolato (Chocolate)

Chinese black tea, flavours.

1000 g



321

## Mandarino (Tangerine)

Chinese black tea, citrus peels, natural flavour.

1000 g



309

## Cocco (Coconut)

Chinese black tea, coconut, flavours.

1000 g



322

## Mandorla (Almond)

Chinese black tea, almond bites, flavours.

1000 g



312

## Earl Grey

Chinese black tea, with bergamot flavour.

1000 g



326

## Menta (Mint)

Chinese black tea, peppermint leaves, natural flavour.

1000 g

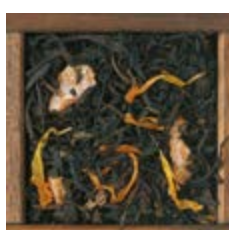


361

## Earl Grey

Chinese black tea from organic farming, natural flavours

1000 g



331

## Pesca (Peach)

Chinese black tea, peach pieces, marigold flowers, flavours.

1000 g

## BLEND S AND FLAVOURED TEAS



708

### Rose

Chinese specialty, no longer traditionally produced, by adding to the black tea Congou the natural flavour of Rose, sweet and longlasting

1000 g



J383

### Bancha alla Ciliegia (Cherry)

Green tea, red currant, flavours.

1000 g



342

### Vaniglia (Vanilla)

Chinese black tea, natural vanilla flavour.

1000 g



J390

### Bancha al Limoncello

Japanese green tea, lemon rind, chamomile flowers, natural flavour.

1000 g



346

### Violetta (Violets)

Chinese black tea, cornflower petals, flavours.

1000 g



J391

### Bancha alla Vaniglia (Vanilla)

Green tea, rose buds, flavours.

1000 g



320

### Chun Mee al Limone (Lemon)

Chinese green tea, lemon rind, natural flavour.

1000 g



J392

### Bancha Fragolina di Bosco (Wild Strawberry)

Green tea, strawberry pieces, red rose buds, flavours.

1000 g



## Flavoured Green Tea



344

### Special Gunpowder Earl Grey

Chinese green tea, flavours.

1000 g



345

### Special Gunpowder alla Menta (Mint)

Chinese green tea, peppermint leaves, natural flavour.

1000 g



J393

### Bancha al Mandarino (Tangerine)

Green tea, orange rind, natural flavour.

1000 g





# FRUIT TEA BLENDS





## FRUIT TEA BLENDS



539

**Albicocca-Pesca  
(Apricot-Peach)**

Orange zest, hibiscus flowers, rose hip, apple, apricot, flavours, peach, calendula. Apricot-Peach flavour.

1000 g



592

**Ciliegia Selvatica  
(Wild Cherry)**

Apple pieces, raisin, hibiscus flowers, rose hip, elderberries, flavours, mallow flowers. Wild Cherry flavour.

1000 g



517

**Arancio (Orange)**

Orange zest, hibiscus flowers, rose hip, apple, flavours, calendula, natural flavour.

1000 g



581

**Cocktail Alpino**

Hibiscus flowers, rose hip, raisin, elderberries, apple pieces, flavours, licorice root, redcurrant leaves, camomile flowers, cornflower petals. Anis- Licorice flavour.

1000 g



544

**Arancio-Cannella-Vaniglia  
(Orange-Cinnamon-Vanilla)**

Hibiscus flowers, orange zest, dog-rose, flavours, cinnamon, calendula. Orange-Cinnamon-Vanilla flavour.

1000 g



621

**Copacabana**

Hibiscus flowers, apple pieces, rose hip, raisin, orange rind, mango, pineapple, flavours, calendula and cornflower petals, natural flavour.

1000 g



632

**Arancio-Cannella-Vaniglia  
(Orange-Cinnamon-Vanilla)**

Delicious caffeine free fruit tea blend, made up of hibiscus and rose hips. The flavor is spicy and citrusy.

1000 g



613

**Crema al Whiskey**

Hibiscus flowers, rose hip, raisin, apple pieces, orange rind, yellow rose buds, flavours, sunflower petals. Whiskey and cream flavour.

1000 g



534

**Arancio Sanguinello  
(Blood Orange)**

Orange rind, hibiscus flowers, rose hip, apple pieces, flavour, safflower petals, natural flavour.

1000 g



513

**Fragola-Panna  
(Strawberry-Cream)**

Hibiscus flowers, raisin, rose hip, orange rind, apple, flavours, jasmine flowers, strawberry pieces. Strawberry-Cream flavour.

1000 g



634

**Cappuccetto Rosso**

Hibiscus flowers, rose hip, raisin, flavours, wild strawberry natural flavour, wild strawberries. Fox grape and red fruits flavour.

1000 g



538

**Fragolina di Bosco  
(Wild Strawberry)**

Rose hip, hibiscus flowers, apple, flavours, elderberries, strawberry pieces, blueberries, cornflower petals. Wild Strawberry flavour.

1000 g



597

**Chiaro di Luna**

Rose hip, hibiscus flowers, apple, raisin, orange rind, flavours, peach, camomile flowers. Sweet flavour.

1000 g



577

**Fragolina di Bosco Extra  
(Wild Strawberry)**

Hibiscus flowers, raisin, elderberries, rose hip, blueberries, flavours, strawberry pieces, rose buds. Wild Strawberry flavour.

1000 g



637

## Fragolizia

Hibiscus flowers, rose hip, strawberry pieces, licorice, pink pepper, red rose petals, flavours, wild strawberry natural flavour. Sweet, fruity flavour.

1000 g



611

## Fuego!

Rose hip, hibiscus flowers, rose buds and petals, flavours, safflower, red currant, raspberries, strawberry, pink pepper, chilli. Citrousy and spicy flavour.

1000 g



593

## Frutti di Bosco German Style (Wild Berries)

Raisin, hibiscus flowers, elderberries, flavours, blueberries.

1000 g



563

## Fuoco di Camino

Hibiscus flowers, sugar crystals "rock", rose hip, orange rind, apple, flavours, cinnamon, cloves, almond, jasmine flowers. Spicy flavour.

1000 g



502

## Frutti di Bosco (Wild Berries)

Hibiscus flowers, rose hip, apple, flavours, blueberries, elderberries, red currants, calendula, cornflower petals. natural flavour

1000 g



626

## Giardini Naxos

Hibiscus flowers, rose hip, orange rind, apple, lemon grass, camomile, natural flavour. Citrousy, fruity flavour.

1000 g



584

## Frutti di Bosco (Wild Berries)

Hibiscus flowers, rose hip, apple, elderberries, blueberries, redcurrant leaves, natural flavours, calendula, mallow flowers and leaves.

1000 g



640

## Ginger Fresh

Red and white hibiscus flowers, rose hip, lemon rind, mint, ginger, natural flavour, sunflower and cornflower petals. Fresh Lemon-Mint-Ginger flavour.

1000 g



522

## Frutti e Fiori

Hibiscus flowers, rose hip, raisin, apple, orange rind, natural flavours, calendula, safflower, cornflower, jasmine flowers. Kiwi-Citrousy flavour.

1000 g



573

## Goccia Verde

Rose hip, hibiscus flowers, licorice, apple, mint, camomile, flavours. Mint & Fruits flavour.

1000 g



514

## Frutti Neri (Black Berries)

Hibiscus flowers, rose hip, apple, flavours, black currant, redcurrant leaves, elderberries, blueberries, blackberries, calendula, cornflowers. Black Fruits flavour.

1000 g



540

## Hawaii

Hibiscus flowers, raisin, rose hip, orange rind, apple, mango, papaya, pineapple, flavours, rose buds. Exotic fruits flavour.

1000 g



511

## Frutti Rossi (Red Berries)

Hibiscus flowers, rose hip, raisin, flavours, apple, red currant, strawberry, calendula. Red Fruits flavour.

1000 g



594

## Hawaiian Dream

Raisin, apple, hibiscus flowers, rose hip, mango, papaya, pineapple, orange rind, flavours, cornflower. Exotic flavour.

1000 g



## FRUIT TEA BLENDS



620

**Madagascar**

Raisin, hibiscus flowers, apple, rose hip, mango, flavours, cornflower. Vanilla & Fruits mix flavour.

1000 g



629

**Mille e una notte**

Hibiscus flowers, rose hip, mango, almond, natural flavour, strawberry, cornflower. Exotic fruits-Citrus flavour.

1000 g

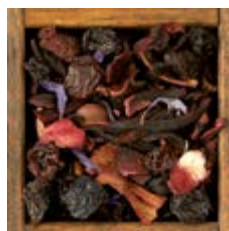


572

**Magia Blu**

Hibiscus flowers, rose hip, apple, elderberries, orange rind, apricot, pear, flavours, cornflower. Basket of fruits flavour.

1000 g



504

**Mirtillo-Ciliegia (Blueberry-Cherry)**

Hibiscus flowers, raisin, elderberries, rose hip, flavours, blueberries, cornflower. Blueberry-Cherry flavour.

1000 g



548

**Mandarino-Fragolina di bosco (Tangerine-Wild Strawberry)**

Hibiscus flowers, rose hip, orange rind, apple, raisin, flavours, safflower, calendula. Tangerine-Wild strawberry flavour.

1000 g



551

**Mirtillo-Ciliegia Extra (Blueberry-Cherry)**

Raisin, elderberries, hibiscus flowers, blueberries, flavours.

1000 g



536

**Mandorla-Cannella-Vaniglia (Almond-Cinnamon-Vanilla)**

Hibiscus flowers, rose hip, orange rind, apple, flavours, cinnamon, almond bites, sunflower flowers. Almond-Cinnamon-Vanilla flavour.

1000 g



610

**Mon Amour**

Hibiscus flowers, sugar crystals, raisin, orange rind, apple, blackberries, flavours, strawberry, sunflower petals. Sweet Strawberry cake flavour.

1000 g

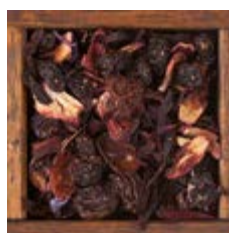


641

**Mango-Pesca-Ginger (Mango-Peach-Ginger)**

Hibiscus flowers, rose hip, mango pieces, ginger root, natural flavours, calendula petals, flavour. Mango-Peach-Ginger flavour.

1000 g



526

**Mora-Lampone (Blackberry-Raspberry)**

Hibiscus flowers, raisin, rose hip, flavours, blackberries, redcurrant leaves, raspberries, cornflower. Blackberry-Raspberry flavour.

1000 g



566

**Mari del Sud**

Hibiscus flowers, rose hip, apricot, orange rind, elderberries, apple, flavours, redcurrant leaves, mallow, calendula. Strawberry-Almond flavour.

1000 g



624

**Moulin Rouge**

Hibiscus flowers, rose hip, rooibos, apple, orange rind, rose buds, flavours, safflower, strawberries and raspberries. Wild Strawberry delicate flavour.

1000 g



508

**Mela-Limone (Apple-Lemon)**

Orange rind, hibiscus flowers, rose hip, apple, flavours, calendula. Apple-Lemon flavour.

1000 g



614

**Natalizio**

Hibiscus flowers, rose hip, apple, coriander, yellow rose buds, natural flavour, cinnamon, safflower. Spicy flavour.

1000 g



630

### Notte magica

Hibiscus flowers, rose hip, apple, papaya, flavours, pink rose petals, yellow rose buds, orange flowers. Sweet, fruity flavour.

1000 g



561

### Raggio di Luna

Rose hip, hibiscus flowers, apple, orange rind, natural flavour, sunflower petals. Exotic fruits flavour.

1000 g



625

### Notti in Tibet

Hibiscus flowers, rose hip, sugar crystals, orange rind, apple, papaya, natural flavour, elderberries, cinnamon, almond. Sweet, citrusy flavour.

1000 g



579

### Rose Rosse

Hibiscus flowers, rose hip, rose buds, flavours. Strawberry, fruity flavour.

1000 g



633

### Pantelleria

Hibiscus flowers, rose hip, fig natural flavour, fig pieces, yellow rose buds, flavours, calendula. Fig-Almond flavour.

1000 g



643

### Ruby Red (with turmeric)

Hibiscus, hip rose, turmeric, apple, redcurrant, lemon rind, elderflowers, raspberry and strawberry pieces, natural flavours, flavours. Caramel and red berry taste.

1000 g



567

### Paradiso

Hibiscus flowers, rose hip, orange rind, apricot, apple, peach, pear, flavours. Fruity, sweet flavour.

1000 g



568

### Sogno d'Amore

Raisin, rose hip, hibiscus flowers, elderberries, orange rind, apple, apricot, flavours, peach, cornflower. Sweet, fruity flavour.

1000 g



550

### Pesca-Lampone (Peach-Raspberry)

Hibiscus flowers, raisin, rose hip, apple, flavours, raspberries, peach, calendula, cornflower. Peach-Raspberry flavour.

1000 g



576

### Sottobosco

Hibiscus flowers, raisin, elderberries, rose hip, flavours, blackberries, blueberries, redcurrants, mallow. Wild Berries flavour.

1000 g



509

### Pesca-Mela (Peach-Apple)

Hibiscus flowers, rose hip, apple, flavours, orange rind, peach, calendula. Peach-Apple flavour.

1000 g



507

### Speziato (Spicy)

Hibiscus flowers, rose hip, orange rind, flavours, safflower, cinnamon, cloves. Spicy flavour.

1000 g



501

### Piñacolada

Hibiscus flowers, rose hip, orange rind, apple, coconut cubes, pineapple and papaya, flavours. Piñacolada flavour.

1000 g



623

### Sugar Blue

Sugar crystals brown and white, raisin, hibiscus flowers, apple, rose hip, flavours, cornflower. Sweet fruity-flowery flavour.

1000 g



## FRUIT TEA BLENDS



505

**Tropical**

Hibiscus flowers, rose hip, raisin, orange rind, papaya, flavours, pineapple, coconut, cornflower. Exotic flavour.

## White Hibiscus light Fruit Teas

1000 g

Four fragrant fruit teas made from the white *Hibiscus Sabdariffa* flower calyx, known as karkadè. With its delicately coloured infusion, white hibiscus maintains the same characteristics as the red hibiscus: an excellent refreshing drink, full of vitamin C, digestive and caffeine-free.



635

**Stella del sud**

White hibiscus flower, rose hip, apple, lemon rind, mallow flowers, red rose petals, flavours. Fruity, citrusy flavour.

1000 g



636

**Gioiello del Nilo**

White hibiscus flower, rose hip, apple, orange rind, cinnamon, calendula, pink pepper, flavours. Sweet and spicy flavour.

1000 g



638

**Rosa del deserto**

White hibiscus flower, rose hip, apple, red rose petals, strawberry, safflower, flavours. Wild strawberry and kiwi flavour.

1000 g



639

**Fiore d'Argento**

White hibiscus flowers, rose hip, apple, elderberries, red currant, cornflower, flavours. Wild berries flavour.

1000 g

*All fruit tea blends are delicious in their cold version or shakered with ice. CAFFEINE FREE, fruit teas are a real treat at any time of the day.*





# ROOIBOS TEA BLENDS







**KT1**

### Rooibos

A South African national drink, Rooibos produces an aromatic dark red infusion, with hints of hazelnut and wood.

1000 g



**857**

### Graceland

Rooibos provides a good supply of mineral salts and has a smooth and naturally sweet taste. Here it is enriched with apple, almond pieces and flavours, cinnamon and vanilla.

1000 g



**KT8**

### Rooibos BIO

Rooibos obtained from organic farming in South Africa. The infusion is drunk with the addition of milk and sugar.

1000 g



**KT13**

### Lady in Red

An aromatic and delicate blend of Rooibos, red rose petals and pink pepper, with an aroma of fresh strawberries and cream.

1000 g



**856**

### African Dream

A balanced blend of Rooibos, apple pieces and jasmine flowers, with a sweet vanilla cream and caramel flavour.

1000 g



**KT12**

### Marron Glacé

Created with a heady aroma of chestnut, with the sweet and soft notes of Rooibos. Perfect at any time of day.

1000 g



**KT10**

### Belle Époque

Brightly coloured mixture of rooibos, flower petals, orange zest, strawberry and elderberry, with a distinctive flavour of red fruit, pomegranate and peach.

1000 g



**KT14**

### Red Christmas

An extremely aromatic creation: cardamom, cinnamon, ginger, fennel, cloves and pink pepper blended with Rooibos in a sweet spicy blend ideal for family parties.

1000 g



**760**

### Cape Town

Rooibos combines with rose petals, mallow and sunflower in this sweet caffeine-free blend with a delicate and intense fragrance of cream caramel.

1000 g



**KT9**

### Red Passion

A blend of Rooibos, lemon zest, pineapple pieces and rose petals with a sweet passion-fruit flavour.

1000 g



**862**

### Endless

A delicate blend with a sweet and fruity note suitable for everyone. Excellent as evening tea: Rooibos, apple, raisins, red currant leaves, rose petals, coriander and flavours.

1000 g



**864**

### Rosso Africa

A combination of Rooibos, orange zest, Raspberry and flowers, with a citrus aroma. Organically farmed.

1000 g



**852**

### Energy (with ginger)

Rooibos, guarana seeds, rosebuds, ginger root, natural flavour. Peach and ginger flavour. Ideal for natural recovery when energy is low.

1000 g



**KT15**

### Torino 1806

A real treat! Soft, round, sweet blend with hazelnut and vanilla natural flavours, made from Rooibos, caffeine free, and cocoa shell peels, rich in antioxidants.

1000 g



# HERBAL TEAS







841

## Beautiful Mind

Useful for relieving fatigue; green tea, rooibos, guaranà seeds, melissa, lemon grass, ginger root, heather.  
Lemon natural flavour.

1000 g



852

## Energy (with ginger)

Rooibos, guaranà seeds, rosebuds, ginger root, natural flavour. Peach and ginger flavour, perfect for a natural recovery of energy.

1000 g



823

## Buon Respiro

A blend of herbs with well-known balsamic properties. Silver lime flowers and bracts, eucalyptus leaves, fennel seeds, mallow leaves, thyme leaves, chamomile flowers, peppermint, pine buds, sage leaves.

1000 g



839

## Equilibrium

To relieve mental fatigue. Peppermint, lime flowers and bracts, lemon grass, rooibos, natural flavours, cornflowers, strawberry. Delicious mixture, ideal for children.  
Citrus flavoured.

1000 g



846

## Creativity

To overcome mental fatigue, a citrus-flavoured drink: yerba mate, lemon grass, orange zest, rose petals, natural aroma.  
Grapefruit flavoured.

1000 g



813

## Finocchio-Liquirizia (Fennel-Licorice)

Produced from herbs of well known digestive, deflating properties.

1000 g



894

## Curcuma e fiori di Sambuco (Turmeric and Elder flowers)

An herbal tea with fruity and sweet taste, designed to increase the immune system.  
Made from hip rose, turmeric, elder flowers, cinnamon and nettle.

1000 g



892

## Ginger Lemon

Delicious, revitalizing, citrusy herbal blend: drink it throughout the day! Lemon grass, ginger root, orange rind, lemon and ginger natural flavor.

1000 g



821

## Dopo Pasto (After Meal)

Liquorice root, fennel seeds, chamomile flowers, peppermint, gentian root, karkadè flowers, sweet orange zest, Melissa, sage leaves, aniseeds, coriander seeds, rosemary leaves, lavender flowers. It helps digestion.

1000 g



896

## Ginger Menta

A fresh and citrusy blend with eucalyptus, mint, marshmallow, ginger, sage and pine buds, herbs of well known balsamic properties.

1000 g



834

## Dopo Pasto con tè verde

Green tea, liquorice root, fennel seeds, chamomile, peppermint, gentian root, karkadè, sweet orange zest, melissa, sage leaves, aniseeds, coriander seeds, rosemary leaves, lavender flowers. After meal.

1000 g



848

## Good Feeling

For a moment of sweet relaxation, a mixture of rose hip, verbena leaves, black currant, orange flowers, red currant, natural flavours. Peach and apricot natural flavoured, ideal for children.

1000 g



862

## Endless

A delicate blend with a sweet and fruity note suitable for everyone. Excellent as evening tea: Rooibos, apple, raisins, red currant leaves, rose petals, coriander and flavours.

1000 g



853

## Gym Tonic

For recovering after sport, a blend of karkadè, rose hip, lime leaves and bracts, orange zest, apple, elderberry fruits, yerba mate, sage, natural pink grapefruit flavour.

1000 g



## HERBAL TEAS



861

**Herbal Chai**

Highly scented mixture of cinnamon, licorice, aniseed, fennel, ginger, vervain, red currant leaves, cloves, black pepper, cardamom, nutmeg, rose petals, coriander, marigold.

1000 g



854

**Purity**

A blend of herbs with known purifying properties. Melissa leaves, verbena leaves, sage leaves, lemon grass, lemon zest, red currants, calendula flowers, fresh lemon natural flavour.

1000 g



849

**Intorno al Fuoco**

After a busy day, a herb mixture that recreates the sweet atmosphere of an evening in the mountains with roiboos, yerba mate and spices. Sweet spicy flavour.

1000 g



818

**Refreshing**

Licorice root, couch grass, aniseeds, decorticated marshmallow root, pellitory, mallow flowers and leaves, white horehound, plantain. To refresh the body.

1000 g



860

**Leggerezza**

A mixture of semi-oxidized tea and herbs with well-known leg relaxing properties. Oolong tea, centella, red vine, licorice root, red currant leaves, red rose, cornflower, vervain.

1000 g



822

**Regolax**

Licorice root, elderberry flowers, chicory root, flax seeds, mint leaves, althaea root, mallow leaves, Melissa leaves, pellitory. Gently regulates the intestinal functions.

1000 g



836

**Linea con tè verde**

20% green tea, fennel seeds, licorice root, burdock root, dandelion root, chicory root, couch grass root, peppermint, nettle leaves, pellitory, artichoke leaves. A detox blend.

1000 g



819

**Relaxing**

Chamomile, orange blossom, silver lime flowers and bracts, hops, birch bark, peppermint, melissa, passion flower, hawthorn flowers and leaves, fennel seeds, lavender flowers, woodruff leaves, marjoram leaves.

1000 g

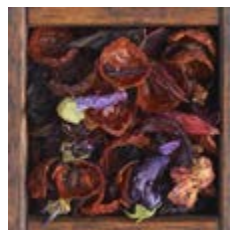


840

**Memory**

Created to help concentration and study, a mixture of mate, orange zest, ginseng root, cinnamon, cloves, pink pepper and flavours. Spicy flavour.

1000 g



891

**Rosa Canina e Mirtillo  
(Rose hips and Blueberries)**

Fragrant and fruity herbal tea blend of wild rose hips, rich in vitamins and blueberries, known for the antioxidant properties.

1000 g



851

**Ninna Nanna**

Created for children, a sweet mixture for relaxing. Apple, chamomile, dog-rose, verbena, black currant, orange flowers, lime, natural flavour, cornflower. Wild strawberry flavour.

1000 g



865

**Silhouette**

A mixture of herbs with well-known carminative properties with an intense aroma of aniseed. Fennel and aniseeds, apple, redcurrant leaves, karkadè, calendula and flavours.

1000 g



850

**Padiglioni Lontani**

A perfect mixture to sip while relaxing. Karkadè, apple, dog-rose, chamomile, black currant, apricot, cardamom, verbena, flavours. Sweet creamy flavour.

1000 g



817

**Tiglio-Fiori d'arancio  
(Linden and Orange flowers)**

Two herbs with well-known relaxing properties, for a sweet honey-flavoured drink suitable for any time of day.

1000 g



820

### Tonic

Hawthorn flowers and leaves, melissa leaves, mallow leaves, nettle leaves, sage leaves, creeping thistle. To awaken and purify the body.

1000 g



889

### Inspire Me

A herb tea blend helping to recover **good mood**. Rooibos, honeybush, orange zest, karkadè, apple, cinnamon, cloves, orange blossom and sweet flavours reminiscent of childhood.

1000 g



858

### Verbena-Menta (Vervaine-Mint)

A mixture of herbs with well-known digestive and calming properties. Verbena leaves, peppermint leaves.

1000 g



887

### Love Me

For **pampering yourself** without giving into gluttony, a sweet green tea-based mixture; rose hip, pineapple and strawberry with a strong aroma of summer fruits.

1000 g



893

### Very Linea

Fresh blend of herbs of well-known diuretic properties: green tea, fennel, licorice, dandelion, chicory, couch grass, peppermint, nettle, artichoke and Nanah Mint natural flavour.

1000 g



888

### Purify Me

Pollution, stress and bad eating habits affects body hardly. Purify Me is an helpful mixture of well known **detox herbs**: green Gunpowder, lemon grass, lemon zest, elderberry flowers and citrus natural flavour.

1000 g



832

### Vin Brulé

Orange zest, cinnamon, cloves, cardamom. Used to flavour wine, grog, tea and hot drinks. The spices in this blend are digestion helpers.

1000 g



886

### Slow Me

A mixture of herbs with **relaxing properties**, ideal to end a busy day: rose hip, white karkadè flowers, lime flowers and bracts, chamomile, pink rose petals and a delicate scent of ripe strawberries and peaches.

1000 g

## Just for me Tisanes

## Loose Herbs

Six herbal blends promoting relax and well-being, according to body's needs and different moods.



885

### Energize Me

An **extra boost of energy** to start the new day: Yerba mate, Chun Mee green tea, hawthorn, orange zest, cinnamon, guaranà, cardamom and sunflower petals with a sweet and delicately spicy aroma.

1000 g



802

### Anice semi (Anise seeds)

Aniseeds, *Pimpinella Anisum*, are traditionally used to deflate and calm the stomach.

1000 g



884

### Fit Me

Mixture of green tea and herbs with well-known draining properties, perfect for **getting back into shape**. Bancha tea, hibiscus, fennel red vine, dandelion, centella, sweet mint and orange blossom with the scent of wild berries.

1000 g



801

### Arancio fiori (Orange flowers)

*Citrus Aurantium* flowers used for their well-known relaxing and soothing properties.

1000 g



## HERBAL TEAS



807

**Arancio dolce scorze  
(Sweet Orange rinds)**

*Citrus Aurantium* zest is used as an excellent aromatiser for tea, infusions and tisanes.

1000 g



LAP1

**Lapacho**

Known as the "Tea of the Incas", it is obtained from the bark of the *Tabebuia*, a plant of the *Bignoniaceae* family and is widespread in South America. According to medical research it strengthens the immune system.

1000 g



803

**Camomilla fiori  
(Camomile whole)**

Whole flower heads of *Matricaria Camomilla*: the plant has been known since antiquity for its calming and soothing properties.

1000 g



808

**Liquirizia taglio tisana  
(Licorice)**

*Glycyrrhiza Glabra* root is appreciated for its well-known diuretic and purifying properties.

1000 g



863

**Camomilla BIO  
(Camomile whole)**

Whole chamomile flowers, enjoyed by many for their delicate aroma and naturally sweet flavour.

1000 g



811

**Menta Piperita foglie  
(Peppermint)**

Peppermint, renowned for its digestive properties, is used to add flavour to dishes, tea, infusions and herbal teas.

1000 g



805

**Finocchio semi (Fennel seeds)**

*Foeniculum sativum* seeds are used for their well-known deflating and digestive properties.

1000 g



810

**Rosa Canina bacche  
senza semi, taglio tisana  
(Hip rose)**

Rose hip is famous for the astringent and diuretic properties of its fruits.

1000 g



HNB

**Honeybush**

Produced from the processing of leaves from a bush of the leguminous plants family that grows in South Africa. Sweet tasting with a strong honeyed aroma. Caffeine-free, it is excellent even drunk without sugar.

1000 g



812

**Tiglio fiori e brattee (Linden)**

Relaxing and soothing properties are attributed to the flowers and bracts of *Tilia Parvifolia* or *Tilia argentea*. The plant is widespread throughout Europe.

1000 g



KSF2

**Karkadè taglio tisana  
(Hibiscus)**

Karkadè, with a delicately acidulous flavour, is traditionally drunk in some African countries, with the addition of fresh mint leaves and sugar.

1000 g



831

**Verbena (Vervain)**

*Lippia Citriodora*, known as Lemon Verbena, is appreciated for its well-known digestive and stomach soothing properties.

1000 g



KSF6

**Karkadè bianco taglio tisana  
(White hibiscus)**

In some areas of Africa, white hibiscus flowers are used to prepare a pleasantly acidulous and pungent, caffeine-free drink, traditionally to toast a newly-married couple.

1000 g



YM

**Yerba Mate**

Known as the "Tea of the Jesuits", it is produced from the processing of *Ilex Paraguaiensis*: the beverage has tonic properties and abounds with caffeine. For many centuries it has grown all over South America.

1000 g



A close-up photograph of a traditional Japanese-style tea bowl (chawan) filled with vibrant green tea. The bowl is decorated with a blue and white floral pattern. In the foreground, a pile of dark green, needle-shaped loose tea leaves is scattered on a light-colored wooden surface. The text "ORGANIC TEAS AND INFUSIONS" is overlaid in white, sans-serif capital letters on the upper left portion of the image.

# ORGANIC TEAS AND INFUSIONS





## ORGANIC TEAS AND INFUSIONS

### ORGANIC TEAS AND INFUSIONS



AS4

#### Assam FTGFOP1

Black tea from organic farming. Strong, full-bodied taste with hints of malt.

1000 g



361

#### Earl Grey

Chinese black tea, with a smooth, light taste, enriched with essential oil of Calabrian bergamot.

1000 g



J400

#### Bancha

Green tea with long, flattened leaves organically grown. Thirst-quenching with a modest caffeine content.

1000 g

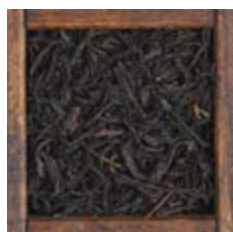


414

#### English Breakfast

Obtained from Indian, Chinese and African tea, a revisitation of a great whole leaf classic, from organic cultivations. A strong, full-bodied mixture, perfect for breakfast.

1000 g



J384

#### Benifuki

A real rarity, Benifuki is the only black tea produced in Japan from the cultivar of the same name. It has a highly aromatic, mild and sweet character, with an aftertaste of Cinnamon.

250 g



J401

#### Genmaicha Matcha

An excellent Genmaicha, with Sencha green tea and toasted rice, enriched with the intense flavor of Matcha powdered tea. Pleasantly herbaceous, rich in anti-oxidants.

500 g

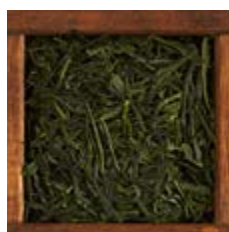


863

#### Camomilla (Chamomile flowers)

Whole chamomile flowers, enjoyed by everyone because of its delicate scent and naturally sweet taste.

1000 g



J371

#### Gyokuro Takumi

Superior grade of Gyokuro, obtained from shaded cultivation and entirely hand-made processing. Soft, full, velvety. True tears of jade.

250 g



G906

#### China Green OP

Green tea from organic farming. Flowery scent and a distinctive fresh taste.

1000 g



HNB

#### Honeybush

Produced from processing the leaves of a leguminous bush that grows in South Africa. Sweet tasting with an intense honey aroma. Caffeine-free, it is an excellent drink without adding sugar.

1000 g



DJ23

#### Darjeeling Ambootia FTGFOP1 First Flush

First Flush picking from the garden of Ambootia: light green leaves alternated with dark leaves and silver shoots. Notes of fresh hazelnuts. In the cup it produces a low-tannin, fruity drink with hints of mango.

1000 g



632

#### Infuso Arancio-Cannella-Vaniglia (Orange-Cinnamon-Vanilla)

Delicious fruit tea blend, made up of hibiscus and rose hips. Caffeine free, the flavor is sweet, spicy and citrusy.

1000 g



DJ28

#### Darjeeling Diamond Arya

The jewel among Darjeeling black teas, this extraordinary 2nd flush is soft and fruity, rich of apical buds. A tea for demanding palates.

250 g



584

#### Infuso Frutti di Bosco (Wild Berries)

A classic fruit tea blend made up of hibiscus flowers and rose hips, with the strong wild berries flavour. Caffeine free.

1000 g





**F9203**

### Jasmine Qu Cha

Fragrant green tea scented with jasmine flowers, from spring crop. Hand-worked, limited production. Delicate, flowery, long-lasting aftertaste.

250 g

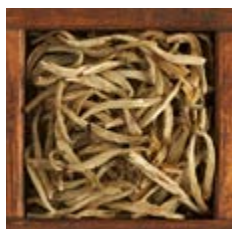


**HC8**

### Ceylon Orange Pekoe OP1

Large leaf black tea obtained from organic cultivations. Aromatic, smooth taste.

1000 g



**F9204**

### Jasmine Silver Needle

High-quality Chinese Jasmine green tea, with plenty of tips, repeatedly mixed with Asian jasmine flowers picked at dawn. A king among Jasmine teas.

250 g



**KT8**

### Rooibos

South African national drink, Rooibos, also called "Red Tea", comes from the processing of *Aspalathus Linearis*.

1000 g



**K01**

### Korean Green Tea

An high-quality spring crop, made up of tender small leaves slightly curled, hand processed. The tea yields a velvety smooth cup, with the fragrance of flowery meadows.

500 g



**864**

### Rosso Africa

A mixture of Rooibos, orange zest, raspberries, blueberries and flowers with citrus aroma. Caffeine free, pleasant at any time.

1000 g

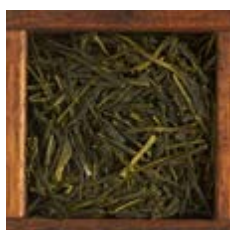


**J387**

### Kukicha verde

An unroasted version of Kukicha, the green tea made with abundance of stalks, giving a light and mild cup. Very very low caffeine content

500 g



**J372**

### Sencha Asagiri

Excellent first crop Sencha, with a fresh and gentle scent, sweet and velvety taste rich in vegetable, delicate nuances.

500 g



**786**

### Lady Strawberry

Smooth tea blend made up of Bancha, a low caffeine green tea. The sweet flavor of wild strawberry enriched the blend.

1000 g



**J402**

### Shincha Homare 2019

A First Flush Gyokuro picked in spring in Kagoshima, with an overwhelming, enveloping scent. The taste is intense and fresh, has distinct umami notes and a mild, longlasting sweetness.

250 g



**J366/BIO**

### Matcha Tsuru

Prized powdered green tea used for traditional Japanese tea ceremonies or as refined food and beverages ingredient adding color, taste and unmistakable fragrance.

200 g



**G605**

### Special Gunpowder

Green tea from organic farming. Grassy scent with a fresh and bitter taste.

1000 g



**784**

### Moroccan Mint Tea

Inspired by a traditional North African recipe. A mixture with an intense and lingering aroma: special Gunpowder green tea and natural aroma of Nana mint.

1000 g



**F9202**

### Special Jasmine

Jasmine Tea from organic farming. Flowery and delicate.

1000 g







## ORGANIC TEAS AND INFUSIONS

### ORGANIC TEAS AND INFUSIONS



8323

#### Yunnan Gong Fu OP

Yunnan black tea. Strong sweet scent, with hints of malt, wood, undergrowth. Smooth, non-astringent infusion.

1000 g



SH1

#### Tai Ping Hou Kui

An absolute Chinese specialty, with a limited production, considered one of the best green tea. The harvest is only on springtime, resulting in a highly fragrant tea.

250 g





Z1	Cane Sugar Brown Crystals Stick (14 cm)	72 pcs. box
Z2	Cane Sugar White Crystals Stick (14 cm)	72 pcs. box
Z3	Sugar Crystals - Brown	1000 g

Z4	Sugar Crystals - White	1000 g
Z5	Sugar Crystals - Rock	1000 g
Z6	Sugar Crystals- Rock Cubes	1000 g

Z7	Cane Sugar Lumps	1000 g
Z18	Sugar Crystals - Rock Cubes - White	1000 g







THIS CATALOG IS FOR PROFESSIONALS ONLY.

All rights reserved. No pictures may be reproduced in any form without written permission of the authors.

**Catalog design by**

Studio Grafico Norfini - Firenze - Italy

**Studio photography by**

Officine Fotografiche - Firenze - Italy

July 2019

La Via del Tè partecipa ogni anno alle più importanti fiere del settore, sia in Italia che all'estero.  
Per informazioni e date, visitare il sito [www.laviadelte.it](http://www.laviadelte.it)

La Via del Tè attends the most important food trade shows, in Italy and abroad.  
For info and dates, visit our web site: [www.laviadelte.it](http://www.laviadelte.it)





**LA VIA DEL TÈ**  
**FIRENZE**  
DAL 1961

**SNAK srl**

**Headquarters:** Via Ponte a Iozzi, 8/1 - Loc. Cascine del Riccio - 50023 Impruneta (Firenze) Italia  
tel. 0039-055-2094076 / 2094077 - fax 0039-055-2094052 - [commerciale@laviadelte.it](mailto:commerciale@laviadelte.it)

**[www.laviadelte.it](http://www.laviadelte.it)**